

# Whitchurch Weekly



3rd May  
2024  
Issue 29

## Meet the Team!

**Name:** Emily Byrne



**Role:** HLTA / Sports Coach (Physical Education)



**About me:** I was born and raised in Islington; yes I am a huge Arsenal fan! My family and I moved to Barnet 12 years ago. My Mum was Irish, my Dad is half English/Irish and I absolutely love travelling 'home' to Ireland during most half term breaks to see family! I trained as a sports coach 10 years ago, which makes me feel very old! After leaving college I worked as a receptionist and leisure assistant. I was then given the opportunity to work as a teaching assistant in a local Harrow school; this is where my journey began and I haven't looked back. I have been teaching P.E. for 5 years now and have only been a Whitchurch a year but it feels much longer!

**Hobbies and interests:** I love all things sport but going to the gym and working out are my passion; people call me crazy as I wake up at 4am to go! I also am a big lover of running - I ran the London Marathon in 2021, the London half marks in 2023 and I have signed up to both again in 2025, so you could be seeing me on your TV screens next year! I love nothing more on a Sunday than taking a walk through my favourite park, Hampstead Heath, with a coffee and headphones listening to music!



**Best part about my role:** There are so many great things about my role. I love teaching all year groups from Reception to Year 6, seeing children grow throughout the year, getting to know their different personalities and winning sports competitions. I would say that inspiring and developing children's passion for sport and physical activity is definitely up there. Many of the children at Whitchurch know that I am very competitive and do not like losing, however they know that if they try their best and put their all in, I will always be proud! We have a wonderful school community that I thoroughly enjoy being a part of!

# General Notices and Highlights



## Music Events

- Whitchurch Senior Choir will be attending the Junior Music Day at John Lyon School on Tuesday (9.15am to 4.15pm).
- Year 4 Trumpets and Clarinets will be performing on Friday morning (9.15am-9.45am for 4BS and 4CM and 10.15am-10.45am for 4XL and 4SF).

## School Lunches

We are experiencing difficulties in the kitchen as the number of bookings do not tally with the number of children taking a meal. Often, by the time Years 5 and 6 take their meals, there is not enough production and the chef and his team need to quickly rustle something together. This has a significant impact on the lunch service; pupils end up with the wrong meal and the wait reduces their play time.

In order to maintain an efficient service, please can you book on time. The cut off for the week ahead is Sunday PM - however now that all school meals are free, we request that you book the whole term in advance.



## Illness

Please ensure that you keep your child off school if they have diarrhoea or vomiting. They need to stay at home for 48 hours after their symptoms have cleared up. They should also be kept off school if they have a high temperature.

Please see the NHS website for more information:  
[www.nhs.uk/conditions/diarrhoea-and-vomiting](http://www.nhs.uk/conditions/diarrhoea-and-vomiting)  
[www.nhs.uk/conditions/fever-in-children](http://www.nhs.uk/conditions/fever-in-children)

## Sports Day

A reminder that Sports Day will be on the following dates for different year groups:

Monday 15th July - Reception (PM)  
Tuesday 16th July - Years 1 to 3 (AM)  
Thursday 18th July - Years 4 to 6 (AM)

Leopards  
class assembly  
on Thursday  
at 9.05am

Farewell to  
our Site Manager  
Andrew Henry,  
who retires today  
after almost 20 years  
at Whitchurch. We  
wish him all the best  
for the future!

Early May  
Bank Holiday  
on Monday

# Dates for your Diary

Summer  
1st



Tuesday 7th May

Whitchurch Senior Choir: Junior Music Day at John Lyon School (9.15am-4.15pm)

Friday 10th May

Year 4 Trumpets/Clarinets (9.15am-9.45am for 4BS and 4CM and 10.15am-10.45am for 4XL and 4SF)

13th to 16th May

KS2 SATs Week

Tuesday 14th May

5SK and 5SC visit to Kew Gardens

Wednesday 15th May

Reception visit to Hertfordshire Zoo  
5PA and 5ET visit to Kew Gardens  
Year 4 Junior Choir Choral Day at NLCS (10.20am-4pm)

Monday 20th May

Nursery visit to Woodside Farm

Mon 20th to Tues 21st May

Year 5 Residential visit to Woodrow High House

Tuesday 21st May

Year 1 visit to Canons Park - picnic (AM)  
Year 4 visit to London Zoo  
Year 6 Play in a Day (Macbeth)

Thurs 23rd & Fri 24th May

Class Photographs



May Half  
Term Break  
27th to  
31st May

## Class Assemblies

Thurs 9th May - Leopards  
Thurs 16th May - Jaguars  
Tues 21st May - Lions

Please note  
amended  
dates for class  
assemblies  
(still at  
9.05am)

Monday  
22nd July  
Year 6 Leavers'  
Assembly  
(2pm)

# Whitchurch Stars of the Week



Well done to our stars of the week, who have been selected for excellent work and demonstrating our school values

**RRA Tigers** Tanishka  
**RNW Leopards** Evania  
**RRV Lions** Rohan  
**RPS Jaguars** Yusra

**1ST** Anna  
**1BP** Livia  
**1SM** Guga  
**1CL** Stara

**2HD** Zakeriya  
**2KB** Sofia  
**2SA** Abdur Rahmaan  
**2AR** Matteo

**3NL** Zolay and Maya  
**3MS** Ayumi and Roshanee  
**3LA** Sana  
**3SM** Mathias

Respect  
Responsibility  
Resilience  
Honesty  
Generosity  
Aspiration

**4BS** Saanvi  
**4CM** Dylan  
**4XL** Melissa M  
**4SF** Rihanna

**5ET** Mariam and Fariha  
**5PA** Kiara  
**5SK** Ghadder  
**5SC** Jeysey

**6HH** Rana  
**6AS** Vaishna  
**6EH** Armineh  
**6MO** Krishna

Thanks to  
the library  
helpers in Year 4:  
Raisa (4SF) and  
Anahi Lily  
(4CM)

## Attendance Stars

Did you know?  
15 minutes late each day  
equals two full weeks of  
school missed every year!

This week's  
attendance  
stars are  
1CL (99.33%)

Most  
improved  
attendance  
RNW

# Year 1 Reading Corner



"I like reading because I can use my imagination and pretend I am in a different world."

Nyla, 1SM

*Favourite book:*  
*Harry Potter and the Philosopher's Stone*

Year 1  
share their  
experiences  
of reading

"I like to know more words and I like reading because it is fun."

Abhay, 1CL  
*Favourite book:*  
*Shoot to Win*



"I like that I am so good at reading and I can read so many things."

Dhilan, 1BP

*Favourite book:*  
*Harry Potter and the Prisoner of Azkaban*

"I like learning new words and I am getting to read more clearly. If I don't know a sound, I can learn it."

Hansin, 1ST  
*Favourite book:*  
*Peter Pan*



"I like reading because it gives you new facts and information."

Jeremy, 1CL

*Favourite book:*  
*Dinosaurs (non-fiction)*

"I like reading because when we read we learn more about different things."

Vaani, 1SM  
*Favourite book:*  
*Rainbow Magic series*





# Year 1 Writing Corner

Year 1 have used 'Alice in Wonderland' as a focus for writing



## Descriptive Story Settings: Alice in Wonderland

"I enjoyed reading and exploring the setting of Alice in Wonderland. I wish one day I can go to visit the real setting. I wish to see who lives in the little cottage. It would have to be someone little as the cottage has a tiny door."

**Dhilan**

"I like reading Alice in Wonderland as it has a magical setting. When I saw the picture I wish I could be there and explore the magical forest." **Jude**

"Year 1's topic this half term is 'Our Magical Garden'. In English we have been using 'Alice in Wonderland' as a focus for writing a descriptive story setting. We have been using our imagination and exploring our senses to describe the setting, using prepositions and interesting adjectives. We look forward to visiting Canons Park soon as inspiration for writing our own imaginative story settings!"

**Miss Patel (1BP)**

In the magical forest there is a shining beaming light coming through the tall brown trees.  
**Ameila**



In the magical forest up above there is a very crunch green leaves. Below the trees there is a red juicy squish mushroom. Next to the mushroom there are some wild flowers that smell like perfume.  
**Livia**

Over the long green grass there is a rusty wooden bridge over the warm crystal clear water.  
**Michelle**

# Support for Families



Workshops

## Parent Workshops

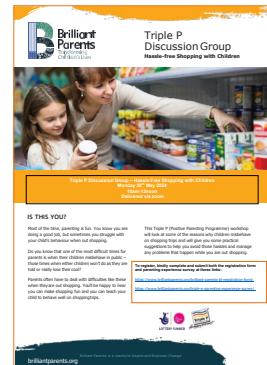
### ESOL Parent Workshops at Whitchurch

Do you want to learn or improve your English while your children are in school? For more information, please email our Family Liaison Officer Mrs Chikhlia [nchikhlia@whitchurchprimary.harrow.sch.uk](mailto:nchikhlia@whitchurchprimary.harrow.sch.uk) or visit Stanmore College directly for registration.

### Brilliant Parents

A reminder that Brilliant Parents are holding online workshops in May. Please see the **Support for Families** page of our website for more information and to register for a place.

- Managing Fighting and Aggression - Monday 13th May
- Dealing with Disobedience - Monday 13th May
- Developing Good Bedtime Routines - Friday 17th May
- Hassle Free Shopping with Children - Monday 20th May



Online Safety

## Online Safety: Media Use and Attitudes

Ofcom, the UK's regulator for communications, has published its Media Use and Attitudes Report for 2024. This report provides a comprehensive insight into the results of several surveys regarding the activities and experiences of children when interacting with entertainment: from TV to video games to social media platforms.

There are numerous statistics in this report relevant to children's online safety, with data covering a wide array of topics - such as young people experiencing harassment, their habits in online games and parents' most common concerns.

Please refer to the poster attached to this newsletter, summarising some of these key statistics.



# Support for Families

Activities



## Holiday Activity Camp

### The Elms Activity Camps - Tuesday 28th to Friday 31st May (9am-4pm)

During the May half term, The Elms are offering holiday activities including art, sports and games for children aged 5-12 years old.

The cost is **£34** per day with Early Bird, NHS and sibling discounts available. Children should wear comfortable sports clothing and bring a healthy snack, packed lunch and drink in a refillable container.



For more information please visit [www.theelms.co.uk](http://www.theelms.co.uk) or see the **Support for Families** page of our website.



Schools  
Counselling  
Partnership

Wellbeing

## Developing self-discipline

Children's brains are still developing the ability to switch gears from what they want to what you want. Every time you ask your child to do something that requires them to give up what they want in order to do what you want, they have to make a choice (but this only works if your child chooses willingly). If you drag them kicking and screaming, they are resisting rather than choosing - and won't build self-discipline skills.

### How parents and carers can help

Set limits with *empathy* so your child *wants* to co-operate and gets plenty of practice. To avoid power struggles, offer two choices. For example: "You can choose, you can either brush your teeth now with your brother, or in 5 mins once he is done". Make sure these are two choices you are OK with!

### Reach Out

Sometimes we could all do with someone to talk to. If you would like to meet Tom for a confidential and non-judgemental chat about you, your child, or any other worries, he is available on **Wednesdays at 9-10am**. You can call/text Tom on **07799 028 461** or email him at [tom@schoolscounsellingpartnership.co.uk](mailto:tom@schoolscounsellingpartnership.co.uk)



# Spotlight on Enrichment

Maths



## Year 4 Inter-school Maths Competition

This week, some of our Year 4 pupils took part in an inter-school times tables competition with Year 4 pupils from Stanburn. They had great fun in competing with and challenging one another in a range of games and activities which tested their mental maths and fluency skills! Here's what the children had to say...

**"The afternoon was lots of fun and it helped me to learn more about my times tables and about division too. It was very challenging, but the biscuits at the end of the competition made it all worth it!" - Deumari**

**"The games were a lot of fun, especially the maths board games as well as the activities that Stanburn brought with them." - Sefora**

**"It was lots of fun because we got to partner up with another pupil from Stanburn, get to know each other and learn skills from them too." - Ava**



# Useful Signposting

Quick  
Links



## Website Calendar

[www.whitchurchprimary.harrow.sch.uk/events](http://www.whitchurchprimary.harrow.sch.uk/events)

## Term Dates

[www.whitchurchprimary.harrow.sch.uk/page/term-dates](http://www.whitchurchprimary.harrow.sch.uk/page/term-dates)

## Senior Leadership Team Contacts

[www.whitchurchprimary.harrow.sch.uk/page/senior-leadership-team](http://www.whitchurchprimary.harrow.sch.uk/page/senior-leadership-team)

## Lunch Menu

[www.whitchurchprimary.harrow.sch.uk/page/school-meals](http://www.whitchurchprimary.harrow.sch.uk/page/school-meals)

## Support for Families

[www.whitchurchprimary.harrow.sch.uk/page/support-for-families](http://www.whitchurchprimary.harrow.sch.uk/page/support-for-families)

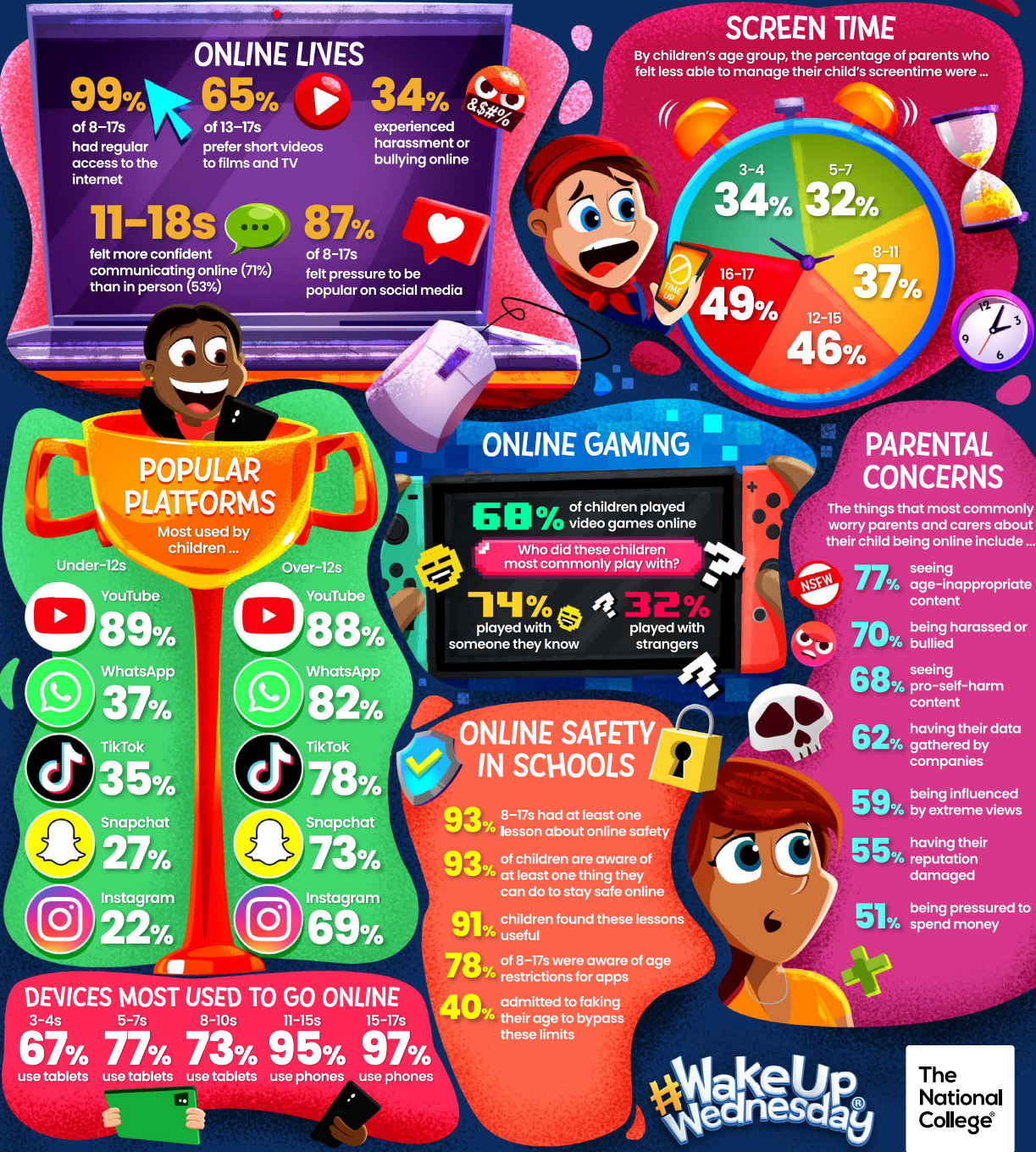
## School Office Email

[office@whitchurchprimary.harrow.sch.uk](mailto:office@whitchurchprimary.harrow.sch.uk)

At The National College, our WakeUpWednesday guides empower and equip parents, carers and educators with the confidence and practical skills to be able to have informed and age-appropriate conversations with children about online safety, mental health and wellbeing, and climate change. Formerly delivered by National Online Safety, these guides now address wider topics and themes. For further guides, hints and tips, please visit [nationalcollege.com](https://nationalcollege.com).

# What Parents & Educators Can Learn from the OFCOM MEDIA REPORT 2024

Each year, Ofcom – the UK’s regulatory body for communications – produces an overview of children and parents’ media experiences over the course of the previous year. At the time of writing, the latest of these reports, ‘Children and parents: media use and attitudes 2024’ has just been published, and we’ve plucked out some of its most thought-provoking findings regarding online safety.



Source: See full reference list on guide page at: [nationalcollege.com/guides/media-use-and-attitudes-report-2024](https://nationalcollege.com/guides/media-use-and-attitudes-report-2024)

@wake\_up\_weds

/www.thenationalcollege

@wake.up.wednesday

@wake.up.weds

Users of this guide do so at their own discretion. No liability is entered into. Current as of the date of release: 01.05.2024

#WakeUpWednesday

The National College