

Welcome to the Year 2

Meet the Teacher Meeting

September 2024



Year 2 Teachers



Mrs S Tezel



Mrs S Akhund



Ms Doshi & Ms Nickson



Miss Karia

Year 2 Learning Support Assistants



Mrs Thiruchenduran



Mrs Nimal



Mrs Partha



Mrs Sangani



Our Values

learners
today,
leaders
tomorrow

Generosity

We are generous
in our words and
actions

Honesty

We are honest
with ourselves
and others

Aspiration

We continually
strive to be the
best we can be

Resilience

We are resilient
to the challenges
we face daily

Respect

We show respect
for those around us,
the diversity of our
community and for
our environment

Responsibility

We take responsibility
for our learning, our
behaviour and the
choices we make

At Whitchurch we have **six core values** which we underpin in **everything we do**. They are covered in weekly assemblies, linked to our behaviour rewards, star assemblies and regularly interwoven into our teaching.

We expect everyone in our community to share these values.

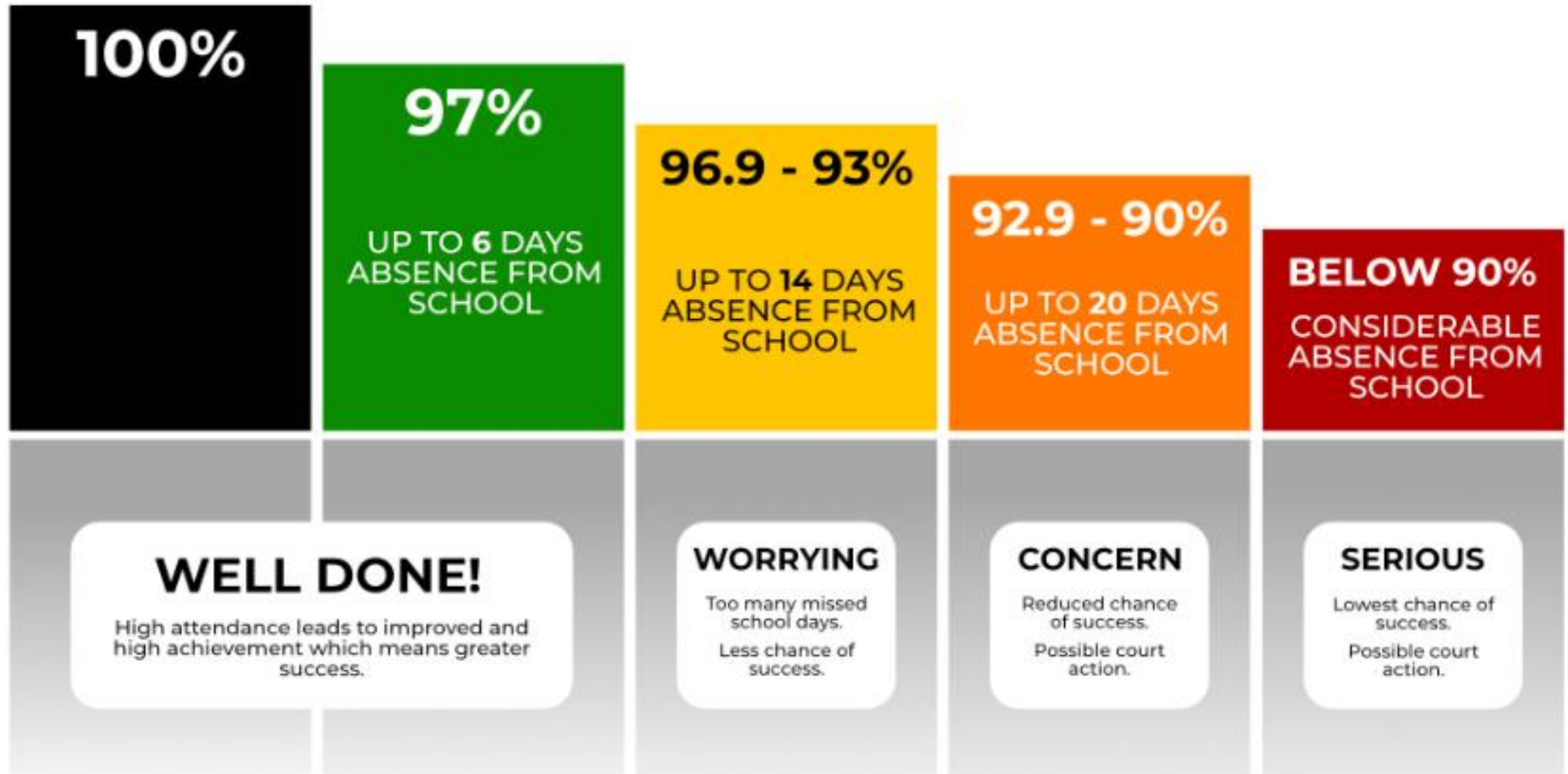
Attendance and Punctuality



- Daily attendance at school is of the **utmost importance**.
- Please ensure that your child is always on time:
 - The school gates open at **8:35am** and close at **8:55am**
 - We expect all Year 2 children to be in their classroom by 9:00am
- **Please do not book holidays during term times** – these **will not be approved** and your child will have these days recorded as unauthorised.
- As much as possible, please ensure you book appointments outside of school day.



Attendance and Punctuality



Pick up and Drop off times



Morning drop off:

Children should be dropped at either main gate or Marsh Lane which are opened at **8.35am**. We have a 'soft start' which means children can arrive from **8.35am until 8.55am** when the gates are locked. After that time children are registered as late and should report to the main school office.

Afternoon collection;

Learning time finishes at **3.20pm** and parents/carers need to wait patiently at the patio door. Sometimes it might be a few minutes later. If you want to speak to the teacher please wait until we have dismissed all other children (the handing over of children is our priority at the end of the day).



Booking School Meals



We strongly recommend a hot school meal in the middle of the day. Children are supported in the hall and we ensure they are encouraged to eat and **try new things**.

Year 2 children are entitled to free school meals.

Lunch bands: Each child with a hot school meal is provided with a coloured band to indicate their meal choice: **Red: meat and fish option; Green: vegetarian options; Yellow: vegan or alternative option**

Packed lunches are discouraged for a number of reasons;


- Difficult to ensure a **healthy balance** of all the essential food groups.
- We have a number of children with **extremely serious allergies** and have to be strict about the food coming into school.
- More difficult for us to **monitor what children are eating**.
- We may **replace any packed lunch that is not compliant with our lunch policies** (we will of course advise parents of our concerns).

Packed Lunch Guidance

Everyday:

- 1 portion of fruit 
- 1 portion of vegetables 
- 1 portion of protein *(to help you grow and stay healthy)*
This includes: meat, fish, chickpeas, lentils, kidney beans, falafel, hummus.
- 1 portion of starchy food *(for energy!)*
This includes: potatoes, pasta, bread, rice, couscous, noodles, cereals.
- 1 portion of dairy *(to build up strength)*
This includes: milk, cheese, yoghurt, fromage frais, custard. 

Once a week:

- Source of Omega *(to help your overall health)*
This includes: oily fish, flaxseeds, chia seeds, soy beans, kidney beans. 

Drink:

- Only water, milk or yoghurt drinks 

*You can have healthy treats in your lunch
– but eat these after everything else!*

Fridays Only:

Chocolate bars
Crisps
Processed Food: sausage rolls,
pies, corned meat/sausages



NO NUTS

NO FIZZY DRINKS
NO FAST FOODS
*(burgers, chips,
McDonalds, KFC etc)*

Key Information: School Uniform



- We ask that your child always has on a clean uniform.
- Red sweatshirt or cardigan (with or without school logo)
- White polo shirt (with or without school logo)
- Dark grey trousers, skirt or pinafore dress / red and white dress for the summer
- Smart black school shoes.
- Shirts should be tucked in **at all times.**
- If your child has shoe laces for either their school shoes or PE shoes, please ensure you are teaching them how to tie them if they do not know already.
- Please ensure all uniform and PE items are **labelled so they can be easily identified.**



Key Information: Physical Education



PE kits

Children come to school in their P.E. kit:

- Coloured t-shirt (with or without school logo) - depending on team colour
- Black shorts
- Grey sweatshirt – outdoors
- Grey tracksuit bottoms – outdoors
- Black plimsolls or black trainers
- White or grey socks
- PE bag (with or without school logo)
- **No jewellery**

PE Days (Autumn 1)

2ST: Tuesday and Wednesday

2SA: Thursday and Wednesday

2KK: Tuesday and Wednesday

2DN: Thursday and Friday



Key Information: Reading at Home



Reading at home

Children are expected to read at least **15 minutes** of their reading book each evening.

Reading records: Reading books are changed and reading records are checked by an adult every **Tuesday** and **Friday**. Please can you **sign your child's reading record** to indicate your child has read each day.

Reading awards: In the process of finalising our whole school reading initiatives approach. Watch out for School Spider messages!



Key Information: Home Learning



Day due /checked	Subject	Details
Daily	Reading	15 minutes reading per day to an adult at least 5 days per week. Recorded in diaries.
Throughout Week	Diary	Signed by parent/carer weekly. Checked by a class teachers throughout week.
Daily	Spellings (Spelling test at the end of the half-term)	Help your child to learn weekly spelling. Writing spelling sentences is encouraged although not compulsory weekly. Challenge your child to identify new difficult words and look up meaning of new words using a dictionary.
Wednesday	Maths/English (alternating)	Maths or English homework will be set every Friday . Children will be given their homework books to complete homework in. Homework is due in the following Wednesday .

Key Information: Spellings



- Each week the children record their list of spellings into their reading records. These words can also be found on the **Year 2 Year group page on the school website.**
- Children will be given a list of spellings to focus on over the half-term. To begin with these words are common exception words that children in Year 2 need to be able to read/write by the end of the year. In addition to these words the children will also be given **'topic words'** later on which are **linked to their everyday cross-curricular learning.**
- Please can you ensure the children are **practicing these spellings everyday.** The children can choose to practice these spellings using the look – copy – cover strategy.
- There will not be a weekly spelling test as the focus in Year 2 will be on Grammar. However, there will be a **mini spelling competition** at the end of each half-term to test children on their spellings.

Key Information



Book bags – they should come into **school everyday**.

Children should not be bringing: gadgets, smart watches or phones.

No party bags / food – if a child has birthday we will of course mark it and perhaps read their favourite e-book/ sing happy birthday but we **never give out food or party bags**.

Stationery: In Year 2 we provide the children with **stationary**. There is no need for children to bring in their own.

Year 2 Curriculum



At Whitchurch, we plan a personalised and interesting curriculum which centres around your child. This half term our key topic across the curriculum is **Animal World**.

This topic interlinks across the different subject to help the children make links between their knowledge and skills.

For example, in Geography, we are studying the World and it's seven continents. In English we are reading 'The Storm Whale' and in science our topic is Animals including humans.



Year 2 Medium Term Plan Autumn 1

	Week 1 W/B 2 Sept	Week 2 W/B 9 Sept	Week 3 W/B 16 Sept	Week 4 W/B 23 Sept	Week 5 W/B 30 Sept	Week 6 W/B 7 Oct	Week 7 W/B 14 Oct	Week 8 W/B 21 Oct
Events / Info	Staff Training Days – 2 nd & 3 rd Sept 3-day week		Pupil Progress Meetings				Phonics Assessment 2ST Class Assembly - 15 th October International Day/Evening (17 th)	Parents Evening (22 nd & 23 rd October)
English	Summer Holiday News Class Charter	The Storm Whale (Part 1) Week 2 – Introduction to the story 'The Storm Whale', story map Week 3 – Exploring adjectives, describing settings using the 5 senses Week 4 – Independent Writing: Plan and write a setting description Whole class feedback Writing Genre: Describing a story setting			The Storm Whale (Part 2) Week 5 - Sequencing and role play the story the Storm Whale Week 6 - Plan and write a retell of the Storm Whale Week 7 - Editing lesson, whole class feedback Writing Genre: Retelling a story			Autumn Poetry

Year 2 Curriculum



- Please take the time to read through the **Year 2 Curriculum newsletter** which was sent out to parents and carers via School Spider. The curriculum newsletter is sent out **at the end of every half term.**
- Within the newsletter it highlights the **cross curricular links** made within this topic, **what key areas we will be covering** and **suggestions to support learning at home.** It also provides key dates and information of any **upcoming events for Year 2.**
- Please also take the time to visit the school website where you can find our Year 2 Medium and Long term plan summarizing what we will be covering over this half term.

This half term
our topic is:
Animal World

Year 2 Curriculum News – Autumn 1 2022

Humanities & Arts

Geography

- Using an atlas and map
- Locating the seven continents and five oceans
- Human and physical geography

Art, Design and Technology

- To design a puppet
- To use a design to make an animal puppet
- To evaluate the finished product

Music

- Singing with increasing vocal control
- Improve playing techniques on **upwood** percussion instruments
- Developing ensemble playing skills

Supporting children at home:

- Explore a map or atlas at home
- Sewing or stitching activity
- Practice singing your favourite songs

Science: Animals including humans

- Explore growth in animals and humans
- The life cycle
- Understanding basic wants and needs

Supporting children at home:

- <https://www.bbc.co.uk/bitesize/topics/r6882hv>
- Discuss what humans need to survive

Computing

- Learn how to stay safe online
- Learning how to keep your information safe
- Learning how to raise concerns online

Supporting children at home:

- Discuss rules at home when online
- Discuss safe websites and games that can be accessed at home

Maths

- Recognising 10s and 1s in 2-digit numbers
- Counting to 100
- Partitioning numbers to 100 in different ways

Supporting children at home:

- Practice counting in 2, 5 & 10s (and 3s)
- Practice ordering numbers based on their size

Physical Education

- To work in a group to solve challenges
- Develop control when kicking a ball
- Develop throwing and catching skills

Supporting children at home:

- Practise catching and throwing
- Practice rolling and dribbling a ball

English

- Write a postcard about my summer holiday
- Plan and write a retell of a fictional story
- Write a non-fiction report on Whales
- Punctuating sentences

Supporting children at home:

- Research Whales
- Write a retell your favourite story

Reading (core texts)

- The Storm Whale by **Benji Davies**
- Selection of non-fiction animal books

PSHE: Being me in my world

- Rights and responsibilities
- Rewards and consequences
- Choices and recognising feelings

Supporting children at home:

- Discuss the responsibilities in your family
- Discuss rewards and consequences at home

Religious Education: Christianity

- Exploring Christians beliefs
- Why is kindness important to Christians?
- The good Samaritan story

Supporting children at home:

- Think of acts of kindness to complete at home
- Discuss how kindness is shown in your religion

French

- Learning about age
- Months of the year and days of the week
- Greetings and birthdays

Supporting children at home:

- Log on to [LIVEUBSCODE](#)
- Search for age and number songs on YouTube

Events and Enrichment

- African Drumming
- Maths Week!
- Priest Visit
- 3GH Class Assembly – 4th October
- International Evening – 13th October

Year 2 Medium Term Plan Autumn 1

	Week 1 W/B 5 Sept	Week 2 W/B 12 Sept	Week 3 W/B 19 Sept	Week 4 W/B 26 Sept	Week 5 W/B 3 Oct	Week 6 W/B 10 Oct	Week 7 W/B 17 Oct
Events / Info	Text	Text	Pupil Progress Meetings	SEN review week	3GH Class Assembly	International Evening (13 th)	Maths Week Parents Eve (18 th & 19 th)
English	Grammar focus – sentence writing Summer post card	Read and Explore the Story 'The Storm Whale'	Plan and write a retell of the Storm Whale	Non-Fiction Research Whales	Features of Non-Chronical Report Plan report	Write a Non-Chronological report on Whale	Off Timetable – Maths week
Grammar	Writing simple sentences	Capital letters and full stops	Capital letters and full stops	Proper nouns	Sentence Types: Questions Statements	Sentence Types: Exclamations Commands	Grammar Kahoot Quiz
Reciprocal Reading Focus	1:1 Reading – book band setting	Prediction	Retrieval	Vocabulary/ Clarifying	Inference	Inference	Sequencing
Maths	Numbers to 20 Count Objects to 100 in 10s Recognise 10s & 1s Use a place value chart	Partition numbers to 100 Write numbers to 100 in words Flexibly partition numbers to 100	10s on the number line to 100 10s and 1s on the number line to 100 Estimate numbers on the number line Compare objects	Compare numbers Order objects & numbers Count in 2, 5, 10s Count in 3s	Bonds to 10 Fact families – addition & subtraction bonds to 20 Related facts Bonds to 100	Add & subtract 1s Add by making 10 Add three 1-digit numbers Add to the next ten Add across a ten	Maths Week

Year 2 Curriculum



Class timetables: Below is an example of our weekly class timetables. These can be found on the school website under the Year 2 Year group page.

- This provides you with a look at **different subjects covered** throughout the week and also indicates **key days and times** when subjects such as PE take place.
- These are updated **every half term**.

Books

Children are provided with a range of different subject books to record their everyday learning.

These are:

English - Yellow

Maths - Blue

Curriculum (Science, History, Geography, PSHE and R.E) - Red

Phonics - Yellow (small)

General Work book - Orange

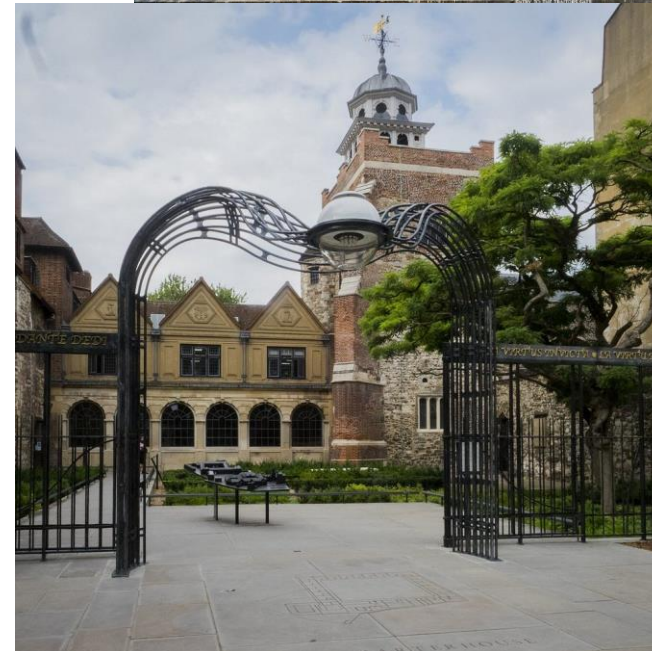
Home Learning - Purple

		9-10am		10.20am-12pm		1pm-2pm	2:00pm-3:00pm	3.00-3.20pm	
Mon	2ST	English		Head Teacher's assembly	Maths	Phonics	Computing (Online Safety)	Story Time	
	2SA								
	2DN								
Tue	2ST	Handwriting	Music (9.30-10)	PE Indoor	Grammar	Phonics	English	Story Time	
	2SA	Music (9-9.30)	Handwriting/ Grammar	Music	English		RE		
	2DN	English		Music (10.20-10.50)	Handwriting/ Grammar		PE Indoor		
Wed	2ST	French		Celebration Assembly	PE Outdoor	Phonics	Maths	Story Time	
	2SA	Library							PSHE
	2KK	PE Outdoor							
	2DN	Maths							
Thurs	2ST	English		Maths	Phonics 11.15-12pm	RE	Geography	Story Time	
	2SA					PE Indoor			
	2DN					RE			
Fri	2ST	Science		Singing assembly	Maths	Phonics	DT	Story Time	
	2SA						PE Indoor		
	2DN								

Year 2 Enrichment

Trips we plan to offer this year:

- **Autumn 1:** Priest Visit, Forest School (21st October (2SA/2ST) and 24th October (2KK/2DN)
- **Autumn 2:** Carol Concert, Africa Day
- **Spring 1:** Place of Worship: Synagogue, Fire Service visit
- **Spring 2:** Florence Nightingale Museum
- **Summer 1:** Place of Worship: Mosque/Regent's Park visit
- **Summer 2:** London Landmark Trip



Parent Volunteers



We feel that the involvement of parents in children's education is vital and we encourage active participation in many ways. In whatever way parents offer their time, we are always extremely grateful. There are many different ways in which parents can help in school – These include:

- Helping with literacy (typically listening to children read)
- Helping with numeracy
- Sharing your professional skills (for example, if you're a doctor, you might go in to talk to a class whose topic is healthy living)
- Helping with classroom activities such as cookery
- Helping on school trips

If you are interested in volunteering, please contact the school office.

For trips, there will always be a deadline by which we will let parent volunteers know that have been selected. If you have not received a message by then this mean you were not selected on this occasion.



Contacting Teachers



We are always happy to talk to you about your child. Parents can **email or phone the school office**. Contact the **Year team leader (Mrs Tezel)** or the easiest way is to **see the teacher at the end of the school day**. If teachers don't have time or more time is needed they will happily arrange an alternative time for you to come and talk .

Communication

- Remember to read the **weekly newsletter**
- **Important dates and updates** are posted on the school website – **please check regularly**
- Download the **School Spider app** to receive important messages and updates

Important: Please tell us any change of details of people collecting your child

CONTACT

Whitchurch Primary School and Nursery
Wemborough Road, Stanmore, Middlesex, HA7 2EQ

School Office | 020 8951 5380
office@whitchurchprimary.harrow.sch.uk

Questions



Thank you for attending

We will now take questions



Tuesday 22nd October and
Wednesday 23rd October

Parents' Evening