

**Welcome to Year 4**  
**Meet the Teacher Meeting**  
**September 2024**



**Year 4 Teachers**



**Mrs B. Solanki**  
**Head of Year**



**Mrs R Price**



**Ms X. Liu**



**Mrs N. Darr**



# Our Values

learners  
today,  
leaders  
tomorrow

## Generosity

We are generous  
in our words and  
actions

## Honesty

We are honest  
with ourselves  
and others

## Aspiration

We continually  
strive to be the  
best we can be

## Resilience

We are resilient  
to the challenges  
we face daily

## Respect

We show respect  
for those around us,  
the diversity of our  
community and for  
our environment

## Responsibility

We take responsibility  
for our learning, our  
behaviour and the  
choices we make

At Whitchurch we have **six core values** which we underpin in **everything we do**. They are covered in weekly assemblies, linked to our behaviour rewards, star assemblies and regularly interwoven into our teaching.

**We expect everyone in our community to share these values.**



# Our Values

learners  
today,  
leaders  
tomorrow



	<ul style="list-style-type: none"> <li>- Self-reflection &amp; awareness</li> <li>- Self-confidence &amp; esteem</li> </ul>
	<ul style="list-style-type: none"> <li>- Time &amp; stress management</li> <li>- Delayed gratification</li> <li>- Professionalism</li> </ul>
	<ul style="list-style-type: none"> <li>- Conflict resolution</li> <li>- Respect &amp; empathy</li> <li>- Teamwork</li> </ul>
	<ul style="list-style-type: none"> <li>- Verbal &amp; non-verbal</li> <li>- Active listening</li> <li>- Being assertive &amp; negotiating</li> </ul>
	<ul style="list-style-type: none"> <li>- Goal setting &amp; planning</li> <li>- Creativity &amp; problem-solving</li> <li>- Decision-making</li> </ul>

815 x 453

We realise that it takes more than academic success to be successful in life.

Therefore, we also focus on equipping the children with the transferrable and life skills that they need to be well-rounded individuals and successful when they leave Whitchurch, enter adulthood and the world of work for example!

# Pick up and Drop off times



## Morning drop off:

Children should be dropped at either main gate or Marsh Lane which are opened at **8.35am**. We have a 'soft start' which means children can arrive from **8.35am until 8:55am** when the gates are locked. After that time children are registered as late and should report to the main school office.

## Afternoon collection;

Learning time finishes at **3.25pm** and parents/carers need to wait patiently at the patio door. Sometimes it might be a few minutes later. If you want to speak to the teacher please wait until we have dismissed all other children (the handing over of children is our priority at the end of the day).



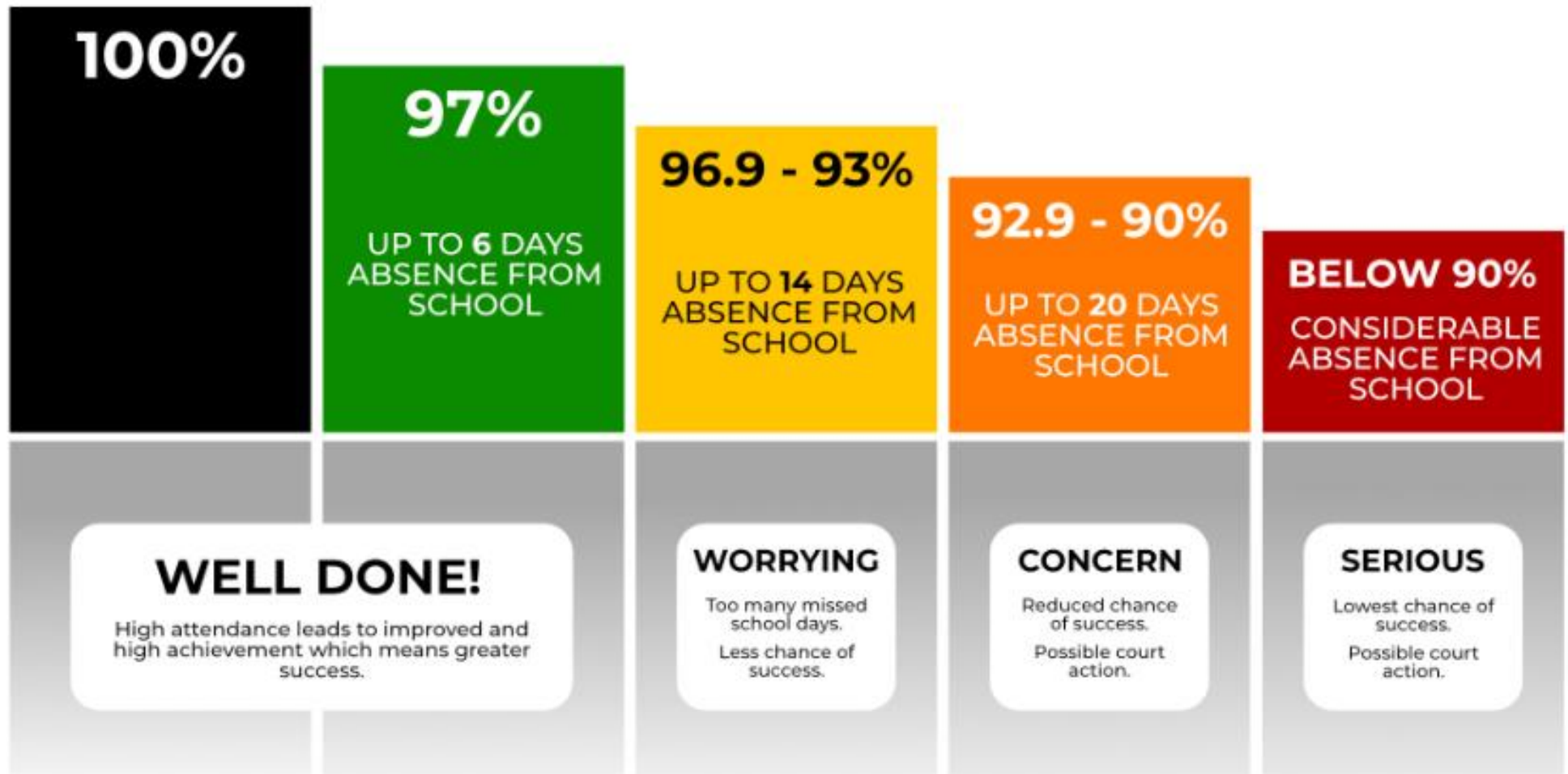
# Attendance and Punctuality



- Daily attendance at school is of the **utmost importance**.
- Please ensure that your child is always on time:
  - The school gates open at 8:35am
  - Children are expected to be punctual in the morning so that they do not miss the morning routine / challenges
- **Please do not book holidays during term times** – these **will not be approved** and your child will have these days recorded as unauthorised
- As much as possible, please ensure you book appointments outside of school day



# Attendance and Punctuality



# Booking School Meals



We strongly recommend a hot school meal in the middle of the day. Children are supported in the hall and we ensure they are encouraged to eat and try new things

Kindly book for the full half term through ParentPay. We have bands which are given to the children in the morning. The colour is dependent on your child's choice of food:

**Red: meat and fish option**

**Green: vegetarian options**

**Yellow: vegan or alternative option**



**Packed lunches are discouraged for a number of reasons;**

- Difficult to ensure a healthy balance of all the essential food groups;
- We have a number of children with extremely serious allergies and have to be strict about the food coming into school;
- It's more difficult for us to monitor what children are eating;
- We may replace any packed lunch that is not compliant with our lunch policies (we will of course advise parents of our concerns).

**Healthy Eating**

If your child has packed lunches, please refer to this nutritional guidance

## Packed Lunch Guidance

**Everyday:**

- 1 portion of fruit
- 1 portion of vegetables
- 1 portion of protein *(to help you grow and stay healthy)*  
This includes: meat, fish, chickpeas, lentils, kidney beans, falafel, hummus.
- 1 portion of starchy food *(for energy!)*  
This includes: potatoes, pasta, bread, rice, couscous, noodles, cereals.
- 1 portion of dairy *(to build up strength)*  
This includes: milk, cheese, yoghurt, fromage frais, custard.

**Once a week:**

- Source of Omega *(to help your overall health)*   
This includes: oily fish, flaxseeds, chia seeds, soy beans, kidney beans.

**Drink:**

- Only water, milk or yoghurt drinks

*You can have healthy treats in your lunch – but eat these after everything else!*

**Fridays Only:**

- Chocolate bars
- Crisps
- Processed Food: sausage rolls, pies, corned meat/sausages

**NO NUTS**

**NO FIZZY DRINKS**

**NO FAST FOODS**  
(burgers, chips, McDonalds, KFC etc)

# Key Information: School Uniform



- We ask that your child always has on a clean uniform;
- Red sweatshirt or cardigan (with or without school logo);
- White polo shirt (with or without school logo);
- Dark grey trousers, skirt or pinafore dress / red and white dress for the summer;
- Smart black school shoes;
- Shirts should be tucked in **at all times**;
- If your child has shoe laces for either their school shoes or PE shoes, please ensure you are teaching them how to tie them if they do not know already;
- Now that we have rainier days, please ensure that your child has a rain mac or coat;
- Please ensure all uniform and PE items are **labelled so they can be easily identified.**





# Key Information: Physical Education



## PE Days

### Year 4:

4BS and 4ND- Wednesday and Friday

4PC and 4XL- Monday and Friday

Swimming in the Summer term

## PE kits

### Children come to school in their P.E. kit:

- Coloured t-shirt (with or without school logo) - depending on team colour
- Black shorts
- Grey sweatshirt – outdoors
- Grey tracksuit bottoms – outdoors
- We ask that a sweat band is provided to cover a Sikh wrist band.
- No other jewellery is allowed. (Earrings must be removed / covered in masking tape.)
- Long hair should be tied up.
- Please cover verrucas with a plaster or provide a verruca guard (socks are not allowed during indoor PE due to slipping)



# Key Information - Stationery



**Stationery:** Please ensure that your child has everything they need for the day.

We have a pop-up stationery shop run by the Year 6 children, every Tuesday at lunch time. The list and prices are as follows:

- Pencil case
- 2 pencils
- Writing pen in **blue**
- Pencil sharpener
- 30cm clear ruler
- Glue stick
- Children's safety scissors
- Green pen (biro)
- **Highlighters- a few different colours (ideally not green)**
- Colouring pencils
- Dry wipe board pen
- Safety scissors

## Stationery Shop Price List

Every Monday in the non-fiction library at 12:45-1:30pm

Item	Price
<b>Pencils</b>	
HB pencil	10p
Ferby Graphite pencil	40p
BIC mechanical pencil	50p
BIC lead refills	£1
<b>Pens</b>	
Pilot Frixion rub out pen	£1.50
Manuscript handwriting	30p
Ball point pen	30p
Fine liner	30p
Whiteboard marker	40p
<b>Rulers</b>	
15cm ruler	10p
30cm ruler	20p
30cm coloured ruler	20p
<b>Pencil Cases</b>	
Clear pencil case - small	50p
Clear pencil case - large	80p
<b>Other</b>	
Glue stick	50p
Highlighter	20p
Protractor	20p
Small simple sharpener	10p
Larger sharpener	25p
Rubber	20p
Mini pencil-top rubber	10p

# Key Information - Reading

**Reading** – In order to promote children for pleasure and children actively engaging in their reading books, we are asking that the children bring in a soft teddy bear that can act as their reading buddy.



# Key Information - Reading



**Reading** – Children in Year 4 are working on their reading stamina, pace and understanding. Children need to read **with an adult** for a minimum of 20 minutes a day (BUG CLUB).

This is so that they **can ask and answer questions**, work on their **decoding** and **vocabulary skills** and **to ensure they are not skipping through words, phrases, sentences and paragraphs that they do not understand**. This cannot be achieved when reading to one's self (this is 'reading for pleasure' and encourages a life-long love of reading.)

When you have read with your child, they need to log the name of the book, pages read and a **reflection** of what they have read in the diary and it will need an adult signature. Diaries are checked by the teacher every **Monday**. Children should bring their dairies to school **every day** so they can start to log important messages and information.



# Key Information - Reading



## Why Can't I Skip My 20 Minutes of Reading Tonight?

Student "A"  
reads **20 minutes**  
each day

3600 minutes in  
a school year

**1,800,000 words**



Student "B"  
reads **5 minutes**  
each day

900 minutes in  
a school year

**282,000 words**



Student "C"  
reads **1 minute**  
each day

180 minutes in  
a school year

**8,000 words**



# Key Information - Diaries



Please encourage your child to be responsible and independent. They need to have their diaries on a Monday morning completed with a reflection about the part of the book they've read. This needs all the evidence of reading and to be signed **by an adult**.



Reading book and pages.  
Signed by an adult daily

Signed by an adult

Parent-teacher communication

# Key Information - Timestables



The multiplication tables check (MTC) is statutory for all year 4 pupils registered at state-funded maintained schools, special schools or academies, including free schools, in England.

The purpose of the MTC is to determine whether pupils can recall their times tables fluently, which is essential for future success in mathematics. It will help schools to identify pupils who have not yet mastered their times tables, so that additional support can be provided.

1x table	2x table	3x table	4x table	5x table	6x table
0 × 1 = 0 1 × 1 = 1 2 × 1 = 2 3 × 1 = 3 4 × 1 = 4 5 × 1 = 5 6 × 1 = 6 7 × 1 = 7 8 × 1 = 8 9 × 1 = 9 10 × 1 = 10 11 × 1 = 11 12 × 1 = 12	0 × 2 = 0 1 × 2 = 2 2 × 2 = 4 3 × 2 = 6 4 × 2 = 8 5 × 2 = 10 6 × 2 = 12 7 × 2 = 14 8 × 2 = 16 9 × 2 = 18 10 × 2 = 20 11 × 2 = 22 12 × 2 = 24	0 × 3 = 0 1 × 3 = 3 2 × 3 = 6 3 × 3 = 9 4 × 3 = 12 5 × 3 = 15 6 × 3 = 18 7 × 3 = 21 8 × 3 = 24 9 × 3 = 27 10 × 3 = 30 11 × 3 = 33 12 × 3 = 36	0 × 4 = 0 1 × 4 = 4 2 × 4 = 8 3 × 4 = 12 4 × 4 = 16 5 × 4 = 20 6 × 4 = 24 7 × 4 = 28 8 × 4 = 32 9 × 4 = 36 10 × 4 = 40 11 × 4 = 44 12 × 4 = 48	0 × 5 = 0 1 × 5 = 5 2 × 5 = 10 3 × 5 = 15 4 × 5 = 20 5 × 5 = 25 6 × 5 = 30 7 × 5 = 35 8 × 5 = 40 9 × 5 = 45 10 × 5 = 50 11 × 5 = 55 12 × 5 = 60	0 × 6 = 0 1 × 6 = 6 2 × 6 = 12 3 × 6 = 18 4 × 6 = 24 5 × 6 = 30 6 × 6 = 36 7 × 6 = 42 8 × 6 = 48 9 × 6 = 54 10 × 6 = 60 11 × 6 = 66 12 × 6 = 72
7x table	8x table	9x table	10x table	11x table	12x table
0 × 7 = 0 1 × 7 = 7 2 × 7 = 14 3 × 7 = 21 4 × 7 = 28 5 × 7 = 35 6 × 7 = 42 7 × 7 = 49 8 × 7 = 56 9 × 7 = 63 10 × 7 = 70 11 × 7 = 77 12 × 7 = 84	0 × 8 = 0 1 × 8 = 8 2 × 8 = 16 3 × 8 = 24 4 × 8 = 32 5 × 8 = 40 6 × 8 = 48 7 × 8 = 56 8 × 8 = 64 9 × 8 = 72 10 × 8 = 80 11 × 8 = 88 12 × 8 = 96	0 × 9 = 0 1 × 9 = 9 2 × 9 = 18 3 × 9 = 27 4 × 9 = 36 5 × 9 = 45 6 × 9 = 54 7 × 9 = 63 8 × 9 = 72 9 × 9 = 81 10 × 9 = 90 11 × 9 = 99 12 × 9 = 108	0 × 10 = 0 1 × 10 = 10 2 × 10 = 20 3 × 10 = 30 4 × 10 = 40 5 × 10 = 50 6 × 10 = 60 7 × 10 = 70 8 × 10 = 80 9 × 10 = 90 10 × 10 = 100 11 × 10 = 110 12 × 10 = 120	0 × 11 = 0 1 × 11 = 11 2 × 11 = 22 3 × 11 = 33 4 × 11 = 44 5 × 11 = 55 6 × 11 = 66 7 × 11 = 77 8 × 11 = 88 9 × 11 = 99 10 × 11 = 110 11 × 11 = 121 12 × 11 = 132	0 × 12 = 0 1 × 12 = 12 2 × 12 = 24 3 × 12 = 36 4 × 12 = 48 5 × 12 = 60 6 × 12 = 72 7 × 12 = 84 8 × 12 = 96 9 × 12 = 108 10 × 12 = 120 11 × 12 = 132 12 × 12 = 144

Statutory Government test:  
Summer term

Children should log into TTRS daily and regularly practice their tables so they can work towards rapid recall.

# Key Information – Home Learning



Day	Subject	Details
<b>Monday-Sunday</b>	Reading	20 minutes reading per day to an adult at least 5 days per week. Recorded in diaries as a reflection of what has been read.
<b>Monday</b>	Diary	Diaries to be brought to school daily. Signed by parent/carer weekly- checked on Mondays
<b>Wednesday/ Thursday/Friday</b>	Spelling test	Tests and spelling bees will be ongoing- your child's class teacher will set the day for this
<b>Thursday</b>	Homework	Homework due
<b>Thursday</b>	Homework	Homework is set on the same day- Mathletics, English, reading, Bug Club and TTRS

Once a term we will be setting a research / creative home learning project.



# Key Information



## Items children need & DO NOT NEED

- No gadgets, smart watches;
- Phones are only allowed in Years 5 & 6 and MUST be switched off before entering school and handed in;
- No Pokémon or football / collectable cards at all.



## No party bags / food

If a child has birthday we will of course mark it and perhaps read their favourite book/ sing happy birthday but we never give out food or party bags. Please also refrain from doing this in the playground.



# Key Information – Curriculum



At Whitchurch, we plan a bespoke and interesting curriculum which centres around your child.

Everything is tied to a central theme; in Year 4, this is **Myths and Legends**.

You can find the curriculum overviews on our website (here)



A Year 4 Curriculum Overview

B Year 4 Curriculum Plan - Autumn 1 2024

C Year 4 Curriculum News - Autumn 1 2024

# Year 4 Timetables



**Class timetables:** Below is an example of our weekly class timetables. These can be found on the school website under the Year 6 year group page.

These are updated **every half term**.

## Books

Children are provided with a range of different subject books to record their everyday learning.

These are:

**English** - Yellow

**Maths** - Blue

**Science** –green

**Curriculum** (History, Geography, PSHE and R.E) - Red

**MFL**- Light blue

**Reciprocal Reading** - Yellow (small)

**General Work book** - Orange

**Home Learning** - Purple



## Year 4BS Timetable – Autumn 1

		9.05am-9.35	9.35- 10.40			11-12pm			1pm-1.30pm	1.30pm-2.15pm	2.15pm-3.25pm
Mon	Registration & early morning work - 8.45am-9.05am	HT assembly	English	Break – 10.40 – 11am		Maths	Lunchtime - 12-1pm	Reciprocal reading	History	Computing	
Tue		English				Maths		Reciprocal reading	Maths	PSHE	
Wed		Celebration assembly	Indoor PE			SP Test 10.30		RE (YTL cover)	RR (YTL cover)	English	Maths
Thurs		NF library	English			Maths		Reciprocal reading	Science	Science	
Fri		Music assembly	English			Art		Outdoor PE 1pm - 2pm	Music (YC cover)		

# Year 4 Curriculum



- Please take the time to read through the **Year 4 Curriculum newsletter** which was sent out to parents and carers via School Spider. The curriculum newsletter is sent out **at the end of every half term**.
- Within the newsletter it highlights the **cross curricular links** made within this topic, **what key areas we will be covering** and **suggestions to support learning at home**. It also provides key dates and information of any **upcoming events for Year 6**.
- Please also take the time to visit the school website where you can find our Year 6 Medium and Long term plan summarizing what we will be covering over this half term.



**English**

- Fiction Unit- Explore a mythical poem, and a legend
- Develop oracy- read a poem aloud using expression, intonation and showing understanding through performance.
- Write a free verse poem
- Write an ending for a Legend

**Supporting children at home:**

- To read and explore the features of a mythical tale and legend. Can you name any famous mythical tales and legends?

**Reading (core texts)**

- Overheard on a Saltmarsh by Harold Munro
- Beowulf the Brave
- The Dragon Slayer

**PSHE**

- Being Me in My World
- Understanding the main themes of citizenship, democracy, rewards and consequences

**Supporting children at home:**

- Talk to your child about their goals for the year. What would they like to achieve? How will they achieve it? Discuss consequences for actions

**Humanities & Arts**

**History**

- Explore the Viking era (AD793 to 1066)
- Why did the Vikings invade Britain?
- What was it like to be a Viking?

**Art, Design and Technology**

- Drawing, 3D pencil drawings
- Sense of proportion

**Music**

- Developing trumpet or clarinet skills
- Improve staff notation reading skills
- Play pieces with 3 notes

**Supporting children at home:**

- Research the origins of Vikings (where they came from) and why they invaded Britain. What were their strengths? What was it like to be a Viking, and what impact did they have on Britain?
- Sketching using art pencil

**Religious Education**

- Judaism – Learn to recognise important people in the Old Testament and what we can learn from them
- Key question: what can we learn from the stories of the Old Testament?

**Supporting children at home:**

- Discuss this religion with your child as they learn new facts. Ask questions about what they are learning each week.

## Year 4 Curriculum News – Autumn 1 2024

**Science**

- States of matter-
- To compare and group materials according to whether they are solids, liquids or gases
- To observe how some materials change state by heating and cooling
- To explain the process of evaporation and condensation

**Supporting children at home:**

- Make a list of solids, liquids and gases around your house. Do they ever change shape?

**Maths**

- Numbers to 10,000, 1000, 100s, 10s and 1s
- Rounding to the nearest 10, 100, 1,000 and 10,000
- Partitioning, comparing, rounding and counting

**Supporting children at home:**

- Introduce Roman numerals
- Please help children to recognise, read and write numbers from 0 to 10,000.
- Please practising addition and subtraction with greater numbers (up to 4 digits).

**French**

- Learn how to shop for fruit and vegetables at the market
- Learn how to order drinks and snacks at a café
- Learn about money and prices

**Supporting children at home:**

- Ask your child to repeat and practice the French words they are learning at school

**Computing**

- Online Safety: learning to stay safe online and keep personal information safe
- To recognise positive and negative peer pressure

**Supporting children at home:**

- Talk to your child about online behaviour; what to do if they experience anything negative online.

**Physical Education**

- Indoor: Gymnastics - developing sequences and a range of travelling actions
- Outdoor: Tennis- racket control, ready position, forward and backhand

**Supporting children at home:**

- Find a safe space, park or garden and practise a range of travelling actions

**Events and Enrichment**

- Vikings Workshop
- Visitor: Judaism



## Year 4 Medium Term Plan Autumn 1 – Myths and Legends

	Week 1 W/B 9/9	Week 2 W/B 16/9	Week 3 W/B 23/9	Week 4 W/B 30/9	Week 5 W/B 7/10	Week 6 W/B 14/10	Week 7 W/B 21/10
<b>Events / Info</b>	Hook: Beowulf the Brave role play by staff						
<b>English</b>	Overheard on a Saltmarsh. Free verse poetry Initial response. Responding to a text using schema.	Figurative language. Speaking and listening activities. Hot seating. Features of a free verse poem.	Planning a free verse poem. Drafting a free verse poem Edit and feedback	Introduce the Dragon Slayer Initial response Explore colour, body language and emotions Hot seating	Continue to explore the plot and character Zone of relevance Apply Figurative language	Plan a character description Write a draft character description	Edit and feedback

# Parent Volunteers



- We feel that the involvement of parents in children's education is vital and we encourage active participation in many ways. In whatever way parents offer their time, we are always extremely grateful.
- There are many different ways in which parents can help in school – These include:
  - Helping with literacy (typically listening to children read)
  - Helping with numeracy
  - Sharing your professional skills (for example, if you're a doctor, you might go in to talk to a class whose topic is healthy living)
  - Helping with classroom activities such as cookery
  - Helping on school trips
- If you are interested in volunteering, please contact the school office



# Before/After School Activities



WRAPAROUND CARE can be booked via [hello@junioradventuresgroup.co.uk](mailto:hello@junioradventuresgroup.co.uk) and via the link on our school website - [Whitchurch Primary School and Nursery: Wraparound Care](#)

## Enrichment clubs

External clubs like Karate, Chess, Robothink, Stage Coach are booked separately and paid for directly to the provider



# Contacting Teachers/the school



Your first point of contact is your child's class teacher. We are always happy to talk to you about your child. Parents can **email or phone the school office**. Please allow 48 hours for a response. Contact the **teacher by email through the school office** or the easiest way is to **see the teacher at the end of the school day**. If teachers don't have time or more time is needed they will happily arrange an alternative time for you to come and talk.

If you need to speak to the team leader, please contact Mrs Solanki at the following address: [bsolanki@whitchurchprimary.harrow.sch.uk](mailto:bsolanki@whitchurchprimary.harrow.sch.uk) Depending on your enquiry, she might ask your child's class teacher to respond to you.

## Communication

- Remember to read the **weekly newsletter**
- **Important dates and updates** are posted on the school website – **please check regularly**
- Download the **School Spider app** to receive important messages and updates- the school office can help you with this

**Important: Please tell us any change of details of people collecting your child**

## CONTACT

Whitchurch Primary School and Nursery  
Wemborough Road, Stanmore, Middlesex, HA7 2EQ

School Office | 020 8951 5380  
[office@whitchurchprimary.harrow.sch.uk](mailto:office@whitchurchprimary.harrow.sch.uk)

# Whatsapp groups



Don't forget our wonderful class reps! If you haven't already, please join your class WhatsApp group for updates and messages.

Please keep conversations respectful and professional.

Teachers and team leaders can only speak to you about anything that concerns your child; therefore please approach the class teacher directly and without delay.



# Questions



**Thank you for attending, and for working in co-operation with us.**

**We are one team and on the same side- for the benefit of your child.**

**Any questions?**

