

Welcome to Year 6
Meet the Teacher Meeting
September 2024



Year 6 Teachers



Miss H. Hogberg



Miss E. Thomas



Mrs C. Marin



Mrs H. Ahti



Our Values

learners
today,
leaders
tomorrow

Generosity

We are generous
in our words and
actions

Honesty

We are honest
with ourselves
and others

Aspiration

We continually
strive to be the
best we can be

Resilience

We are resilient
to the challenges
we face daily

Responsibility

We take responsibility
for our learning, our
behaviour and the
choices we make

Respect

We show respect
for those around us,
the diversity of our
community and for
our environment

At Whitchurch we have **six core values** which we underpin in **everything we do**. They are covered in weekly assemblies, linked to our behaviour rewards, star assemblies and regularly interwoven into our teaching.

We expect everyone in our community to share these values.

Pick up and Drop off times



Morning drop off:

Children should be dropped at either main gate or Marsh Lane which are opened at **8.35am**. We have a 'soft start' which means children can arrive from **8.35am until 8:55am** when the gates are locked. After that time children are registered as late and should report to the main school office.

Afternoon collection;

Learning time finishes at **3.25pm** and parents/carers need to wait patiently at the patio door. Sometimes it might be a few minutes later. If you want to speak to the teacher please wait until we have dismissed all other children (the handing over of children is our priority at the end of the day).



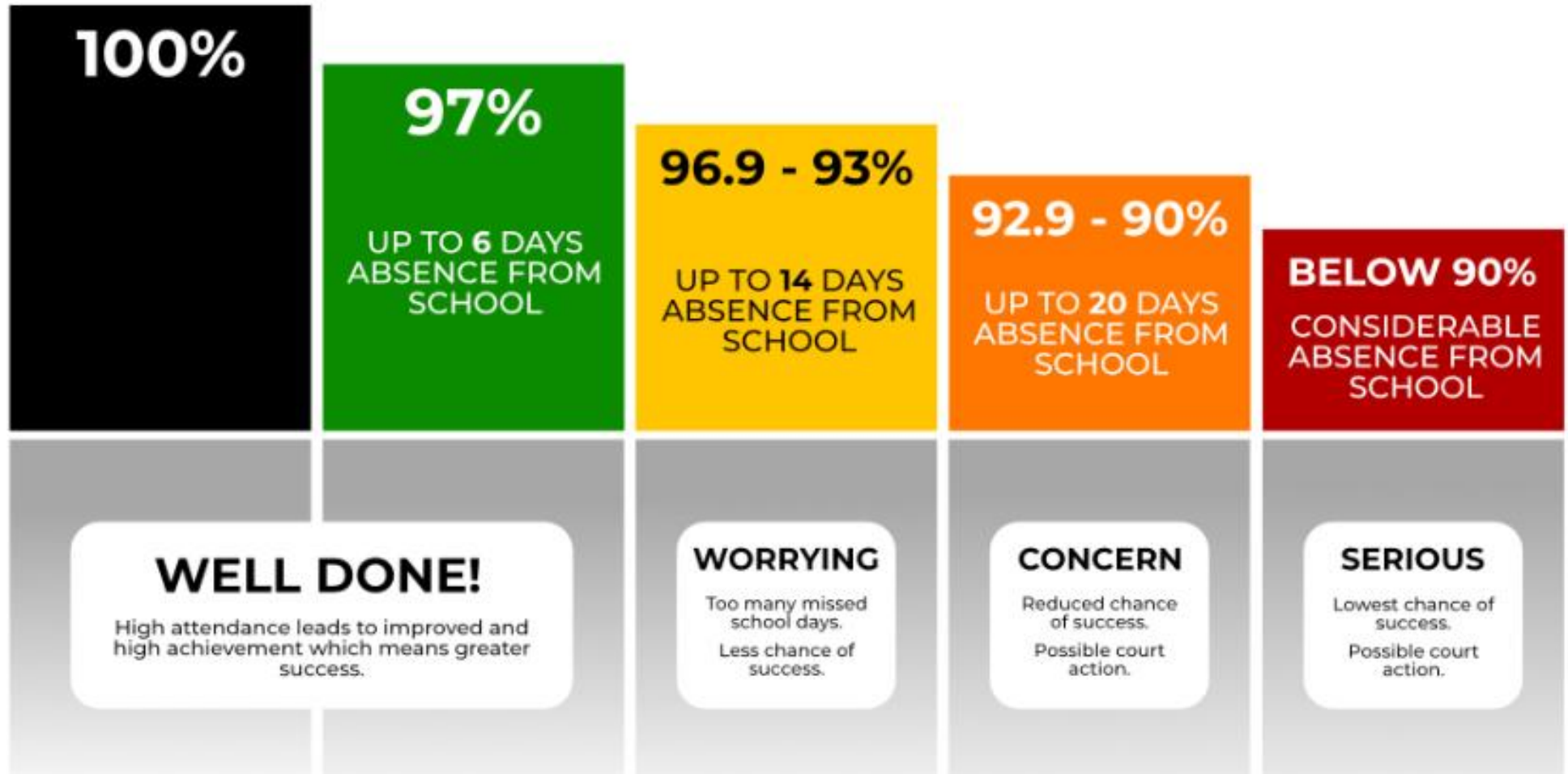
Attendance and Punctuality



- Daily attendance at school is of the **utmost importance**.
- Please ensure that your child is always on time:
 - The school gates open at 8:35am
 - Children are expected to be punctual in the morning so that they do not miss the morning routine / challenges
- **Please do not book holidays during term times** – these **will not be approved** and your child will have these days recorded as unauthorised.
- As much as possible, please ensure you book appointments outside of school day
- Interviews and 11+ exams: please ensure you provide evidence of interviews to the school office
- Children are **not permitted** to miss school for 11+ study days – it is unauthorised absence.



Attendance and Punctuality



Booking School Meals



We strongly recommend a hot school meal in the middle of the day. Children are supported in the hall and we ensure they are encouraged to eat and try new things

Kindly book for the full half term through ParentPay. We have bands which are given to the children in the morning. The colour is dependent on your child's choice of food:

Red: meat and fish option

Green: vegetarian options

Yellow: vegan or alternative option



Packed lunches are discouraged for a number of reasons;

- Difficult to ensure a healthy balance of all the essential food groups;
- We have a number of children with extremely serious allergies and have to be strict about the food coming into school;
- It's more difficult for us to monitor what children are eating;
- We may replace any packed lunch that is not compliant with our lunch policies (we will of course advise parents of our concerns).

Healthy Eating

If your child has packed lunches, please refer to this nutritional guidance

Packed Lunch Guidance

Everyday:

- 1 portion of fruit
- 1 portion of vegetables
- 1 portion of protein *(to help you grow and stay healthy)*
This includes: meat, fish, chickpeas, lentils, kidney beans, falafel, hummus.
- 1 portion of starchy food *(for energy!)*
This includes: potatoes, pasta, bread, rice, couscous, noodles, cereals.
- 1 portion of dairy *(to build up strength)*
This includes: milk, cheese, yoghurt, fromage frais, custard.

Once a week:

- Source of Omega *(to help your overall health)*
This includes: oily fish, flaxseeds, chia seeds, soy beans, kidney beans.

Drink:

- Only water, milk or yoghurt drinks

You can have healthy treats in your lunch – but eat these after everything else!

Fridays Only:

- Chocolate bars
- Crisps
- Processed Food: sausage rolls, pies, corned meat/sausages

NO NUTS

NO FIZZY DRINKS

NO FAST FOODS
(burgers, chips, McDonalds, KFC etc)

Key Information: School Uniform



- We ask that your child always has on a clean uniform;
- Red sweatshirt or cardigan (with or without school logo);
- White polo shirt (with or without school logo);
- Dark grey trousers, skirt or pinafore dress / red and white dress for the summer;
- Smart black school shoes;
- Shirts should be tucked in **at all times**;
- If your child has shoe laces for either their school shoes or PE shoes, please ensure you are teaching them how to tie them if they do not know already;
- Now that we have rainier days, please ensure that your child has a rain mac or coat;
- Please ensure all uniform and PE items are **labelled so they can be easily identified.**



Key Information: Physical Education



PE Days

Year 6:

6HH- Tuesday and Friday

6ET- Tuesday and Wednesday

6CM/6HA- Tuesday and Thursday

PE kits

Children come to school in their P.E. kit:

- Coloured t-shirt (with or without school logo) - depending on team colour
- Black shorts
- Grey sweatshirt – outdoors
- Grey tracksuit bottoms – outdoors
- We ask that a sweat band is provided to cover a Sikh wrist band.
- No other jewellery is allowed. (Earrings must be removed / covered in masking tape.)
- Long hair should be tied up.
- Please cover verrucas with a plaster or provide a verruca guard (socks are not allowed during indoor PE due to slipping)



Key Information - Stationery



Stationery: Please ensure that your child has everything they need for the day.

We have a pop-up stationery shop run by the Year 6 children, every Tuesday at lunch time. The list and prices are as follows:

- Pencil case
- 2 pencils
- Writing pen in **blue**
- Pencil sharpener
- 30cm clear ruler
- Glue stick
- Children's safety scissors
- Green pen (biro)
- Highlighter
- Colouring pencils
- Dry wipe board pen
- Safety scissors

Stationery Shop -Tuesday Lunchtimes 1pm-115pm

Key Information - Reading



Reading – Children in Year 6 are working on their reading stamina, pace and understanding. Children need to read **with an adult** for a minimum of 20-30 minutes a day.

This is so that they **can ask questions**, work on their **pronunciation** and **make links** with what they are reading. This cannot be achieved when reading to one's self (this is 'reading for pleasure' and encourages a life-long love of reading.)

When you have read with your child, they need to log the name of the book and pages in the diary and it will need an adult signature. Diaries are signed by the teacher every Monday.

Children should bring their dairies to school **every day** so they can start to log important messages and information.



Key Information - Reading



Why Can't I Skip My 20 Minutes of Reading Tonight?

Student "A"
reads **20 minutes**
each day

3600 minutes in
a school year

1,800,000 words



Student "B"
reads **5 minutes**
each day

900 minutes in
a school year

282,000 words



Student "C"
reads **1 minute**
each day

180 minutes in
a school year

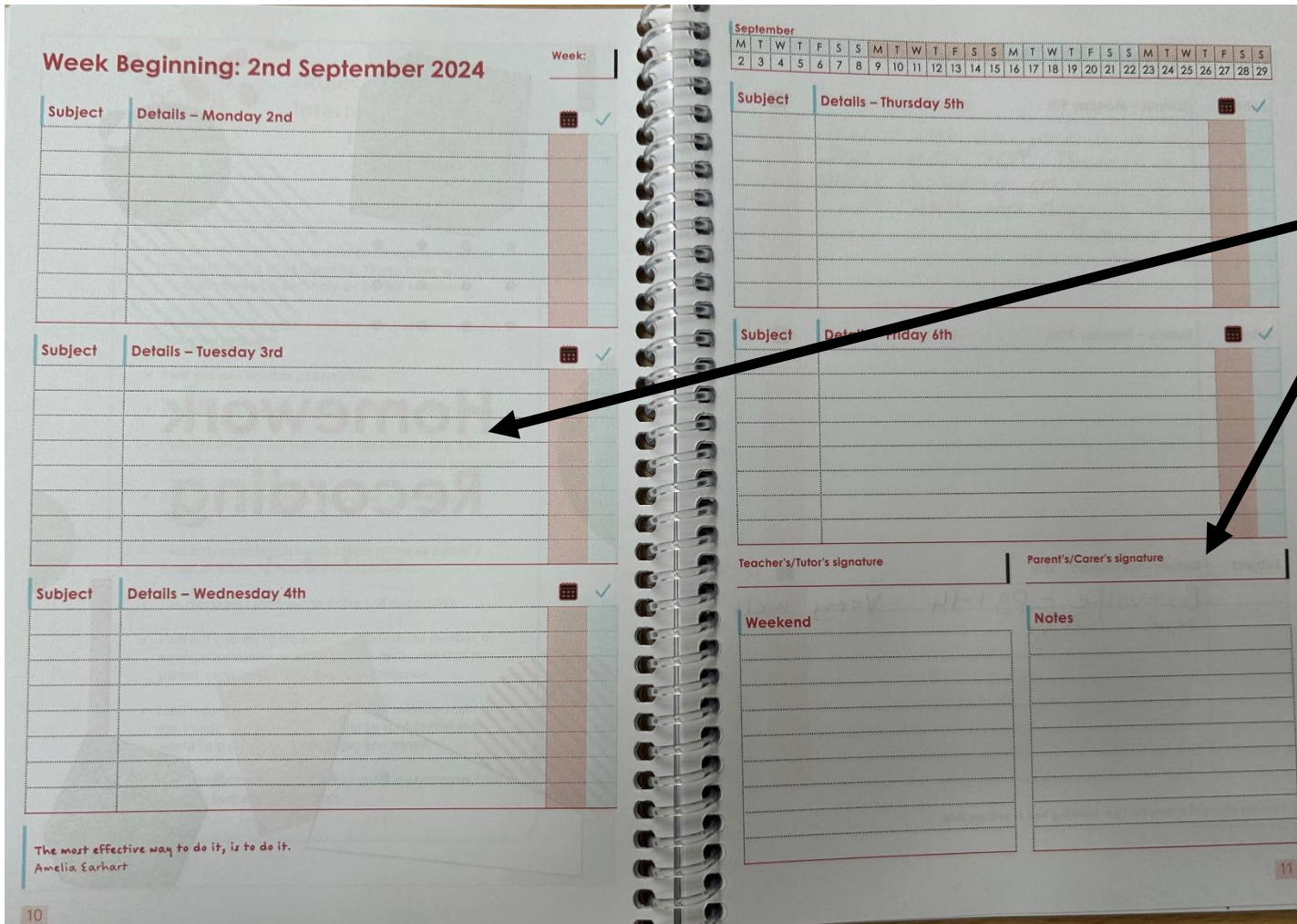
8,000 words



Key Information - Diaries



Please encourage your child to be responsible and independent. They need to have their diaries on a Monday morning. This needs all the evidence of reading and to be signed **by an adult**.



Reading book and pages.
Signed by an adult weekly

Key Information – Home Learning



Day due /checked	Subject	Details
Monday	Reading	20- 30 minutes reading per day to an adult at least 5 days per week. Recorded in diaries.
Monday	Diary	Signed by parent/carer weekly.
Daily	Spellings	Spellings will be embedded in all English lessons Tests and spelling bees will be ongoing Please challenge your child with the words they are reading to you
Thursday	Maths & English	Maths and English homework will be set on Thursdays in the purple homework book. Checked every Thursday.
Thursday	Mathletics	All tasks set to be completed by Thursday

Once a term we will be setting a research / creative home learning project.

Key Information



Items children need & DO NOT NEED

- No gadgets, smart watches;
- Phones are only allowed in Years 5 & 6 and MUST be switched off before entering school and handed in;
- No Pokémon or football / collectable cards at all.



No party bags / food

If a child has birthday we will of course mark it and perhaps read their favourite book/ sing happy birthday but we never give out food or party bags. Please also refrain from doing this in the playground.



Year 6 Curriculum



At Whitchurch, we plan a personalised and interesting curriculum which centres around your child. This half term our key topic across the curriculum is **Leadership**.

This topic interlinks across the different subject to help the children make links between their knowledge and skills and also focuses on the school's core values.

A copy of Year 6's overall curriculum map and Autumn 1 Medium Term Plan can be found on the school website.

Autumn 1 Curriculum

Our topic this half term is Leadership.

[A Year 6 Curriculum Overview](#)

[B Year 6 Curriculum Plan - Autumn 1 2024](#)

[C Year 6 Curriculum News - Autumn 1 2024](#)

Year 6 Curriculum



- Please take the time to read through the **Year 6 Curriculum newsletter** which was sent out to parents and carers via School Spider. The curriculum newsletter is sent out **at the end of every half term.**
- Within the newsletter it highlights the **cross curricular links** made within this topic, **what key areas we will be covering** and **suggestions to support learning at home.** It also provides key dates and information of any **upcoming events for Year 6.**
- Please also take the time to visit the school website where you can find our Year 6 Medium and Long term plan summarizing what we will be covering over this half term.



This half term our topic is: Leadership

Year 6 Curriculum News - Autumn 1

English

- Exploring the events of the Holocaust and concentration camps
- Understand and write a monologue
- Write a setting description
- Explore and analyse character traits

Supporting children at home:

- Research different monologues with your child and talk to your child about what they are.

Reading (core texts)

- The Boy in the Striped Pyjamas by John Boyne

PSHE

- "Being me in my world"
- To identify goals for the year ahead
- To know and understand that there are universal rights for children around the world

Supporting children at home:

- Discuss your own goals that you may have with your child and the reasons why you have chosen them.

Humanities and Arts

Geography

- How did WWII affect different people in society?
- To understand key events which led to the outbreak of WWII
- To understand which countries were involved and at which time

Art, Design and Technology

- Sewing - to join textiles with a variety of different stitching techniques

Music

- Reading rhythmic notation
- Understanding staff notation
- Using music vocabulary

Supporting children at home:

- Research WWII and the events that led to the outbreak of the war and read non-fiction texts related to the war.
- Create own music score using music notation

Religious Education

- What is the best way for a Muslim to show commitment to God?
- How do other groups of religious people show their commitment to God?

Supporting children at home:

- Discuss what commitment means with your child. Discuss how people show commitment in their everyday lives.

Science

- To identify and name the main parts of the human circulatory system
- To describe the ways in which nutrients and water are transported within animals, including humans.
- To recognise the impact of diet, exercise, drugs and lifestyle on the way their bodies function

Supporting children at home:

- Video: [What happens inside your body when you exercise?](#)

Maths

- Place value - numbers to 10 million, powers of 10, rounding numbers, negative number
- Four operations - multiply 4 digits by 2 digits, long division, prime numbers to 100
- Fractions - add and subtract mixed numbers, comparing different fractions

Supporting children at home:

- Practise long multiplication and long division

French

- Describing people (appearance/personality)
- Discuss family members
- Discuss jobs

Supporting children at home:

- Lingua League on [Linguascope](#)

Computing

- Online safety
- Inappropriate use of technology and the internet
- Respecting the privacy of others

Supporting children at home:

- Talk to your child about the types of apps and websites they use as well as how to stay safe on these.

Physical Education

- (OAA) To build communication and trust whilst showing an awareness of safety
- (Gymnastics) To develop gymnastic and performance skills.

Supporting children at home:

- Explore how to do a headstand and cartwheel with your child and watch the Olympic gymnasts form when they perform.

Events and Enrichment

- Visit to the Imperial War Museum
- Holocaust survivors visit (in school)
- The Year 6 Leadership Programme begins
- International Evening



This half term our topic is: Leadership

Year 6 Curriculum Plan – Autumn 1

	Week 1 W/B 9 Sept	Week 2 W/B 16 Sept	Week 3 W/B 23 Sept	Week 4 W/B 30 Sept	Week 5 W/B 7 Oct	Week 6 W/B 14 Oct	Week 7 W/B 21 Oct
Events / Info	Launch of leadership programme	Trip to Imperial War Museum 18 th and 20 th				Holocaust Survivor visit	
English	-Introduction of text -Analyse character traits and draw inferences -Features of a monologue	-Planning a monologue -Shared write of a monologue Assessment-Writing a monologue -Performing a monologue	-Use a range of resources to collate information on concentration camps -Features of imagery -Metaphors, similes, personification and onomatopoeia	-Shared write of a setting description -Plan and write a setting description -Edit and improve setting description - Direct and indirect speech	-Features of narrative writing -Shared write of a short chapter Assessment-Plan and write a short chapter of the story	-Edit and improve short chapter -Read and perform poetry -Learn poetry by heart -Examine the features of a poem	-Shared write of a poem -Plan and write a poem -Edit and improve poem
Grammar	Apostrophes in contractions Apostrophes to show possession	Using commas in lists	Expanded noun phrases Fronted adverbials	Cohesive devices Direct and indirect speech	Parenthesis-brackets, dashes and commas Use of paragraphs	Using a dictionary for meanings and spelling of unfamiliar words	Use a thesaurus to up level vocabulary
Guided Reading Focus	The Boy in the Striped Pyjamas (Chapter 1 and 2) - Predicting	The Boy in the Striped Pyjamas (Chapter 3 and 4) - Retrieval	The Boy in the Striped Pyjamas (Chapter 5 and 6) - Inferencing	The Boy in the Striped Pyjamas (Chapter 7 and 8) - Summarising	The Boy in the Striped Pyjamas (Chapter 9 and 10) - Clarifying	The Boy in the Striped Pyjamas (Chapter 11 and 12) - How the author's choice of words enhances meaning	The Boy in the Striped Pyjamas (Chapter 13 and 14) - Comprehension with combination of skills questions

Year 6 Curriculum



Class timetables: Below is an example of our weekly class timetables. These can be found on the school website under the Year 6 year group page.

These are updated **every half term**.

Books

Children are provided with a range of different subject books to record their everyday learning.

These are:

English - Yellow

Maths - Blue

Science –green

Curriculum (History, Geography,

PSHE and R.E) - Red

MFL- Light blue

Reciprocal Reading - Yellow (small)

General Work book - Orange

Home Learning - Purple

Year 6 Timetable 2024-25

	8:45-9:00	9:00-10:10	10:10-10:40	10:40-11:00	11:00-12:00	12:00-12:30	12:30-1:30	1:30-2:25	2:25-3:25
MON	6HH	Dianzies HT's assembly 9:05-9:35am	Maths	Break	English	RR	Lunch	Science	
	6ET		English		Maths			Science	
	6HA		Maths		English			Computing	RE
	6CM		English		Maths			History	PSHE
TUES	6HH	Year 6 PPA (8:45-9:45am) 6HH: P.E. Daily 6ET: Library - Year 6 6CM: French - Frederic 6HA: P.E. - Korea	Maths	Year 6 PPA (9:45am-11:15am) 6ET: P.E. - Daily 6HA: Library - Year 6 6HA: French - Frederic 6CM: P.E. - Korea	RR/ English	RR	Lunch	Music	Maths
	6ET		RR/Maths		RR/Maths			English	RE
	6HA		RR/ English		RR/ English			Maths	Music
	6CM		RR/Maths		RR/Maths			Science	
WED	6HH	Morning challenge Celebration Assembly 9:05-9:35am	Spelling test	Maths	English	RR	Lunch	RE	Computing
	6ET		Spelling test	English	Maths			PSHE	Indoor PE
	6HA		Spelling test	Maths	English			History	DT
	6CM		Spelling test	English	Maths			English	RE
THUR	6HH	Homework Class assembly 9:05-9:30am Or Arithmetic	Maths	RR	English	RR	Lunch	History	DT
	6ET		English		Maths			DT	Music
	6HA		Maths		English			Indoor PE	PSHE
	6CM		English		Maths			Music	Indoor PE
FRI	6HH	Morning challenge Singing assembly 9:05-9:35am	Maths	RR	English	RR	Lunch	Indoor PE	PSHE
	6ET		English		Maths			History	Computing
	6HA		Maths		English			Science	
	6CM		English		Maths			Computing	DT

Year 6 Trips & Enrichment



Trips we offer this year:

- Imperial War Museum (Autumn 1)
- National History Museum (Spring 1 TBC)
- A trip to a Mosque (Spring 1 TBC)
- A 3-day residential (20-22nd March)
- TfL Junior Citizen Program (Spring 1 TBC)
- Play in a day Macbeth (Summer 1 TBC)
- Bowling (Summer 2 TBC)



Leadership & Responsibilities



Year 6 set the example as Role Models for the school. The expectation is for exemplary behaviour at all times. They have been given responsibilities that they must endure to achieve weekly.

Leadership roles:

- Head Boy and Girl
- Vice Head Boy and Girl
- House Captains and Vice Captains
- Sports Leaders
- Stationery Shop
- Lunch Managers and Monitors
- Eco- Warriors
- Librarians
- Music Captains

Parent Volunteers



We feel that the involvement of parents in children's education is vital and we encourage active participation in many ways. In whatever way parents offer their time, we are always extremely grateful.

There are many different ways in which parents can help in school – These include:

- Helping with literacy (typically listening to children read)
- Helping with numeracy
- Sharing your professional skills (for example, if you're a doctor, you might go in to talk to a class whose topic is healthy living)
- Helping with classroom activities such as cookery
- Helping on school trips

If you are interested in volunteering, please contact the school office.



After School Activities



WRAPAROUND CARE can be booked via hello@junioradventuresgroup.co.uk and via the link on our school website - [Whitchurch Primary School and Nursery: Wraparound Care](#)

Enrichment clubs

External clubs like Karate, Chess, Robothink, Stage Coach are booked separately and paid for directly to the provider – they will start either next week or week commencing 19th.

Internal clubs run by school staff will start in Autumn 2 (after half term) are generally free and will be advertised at the end of this half term they run from 3.30 – 4.30pm



Contacting Teachers



We are always happy to talk to you about your child. Parents can **email or phone the school office**. Contact the **Year team leader** or the easiest way is to **see the teacher at the end of the school day**. If teachers don't have time or more time is needed they will happily arrange an alternative time for you to come and talk .

Communication

- Remember to read the **weekly newsletter**
- **Important dates and updates** are posted on the school website – **please check regularly**
- Download the **School Spider app** to receive important messages and updates

Important: Please tell us any change of details of people collecting your child

CONTACT

Whitchurch Primary School and Nursery
Wemborough Road, Stanmore, Middlesex, HA7 2EQ

School Office | 020 8951 5380
office@whitchurchprimary.harrow.sch.uk

School Contact



You can contact us via appointments made through the office, phone call appointments or via email.

Ms R Inniss (Headteacher)

head@whitchurchps.co.uk

Mrs B Solanki (Year 4 Leader)

bsolanki@whitchurchps.co.uk

**Mr M Thompson-Lawrie
(Deputy Headteacher)**

deputy@whitchurchps.co.uk

Mrs S Khan (Year 5 Leader)

skhan@whitchurchps.co.uk

**Mrs D Qudsiyeh
(Assistant Headteacher for Inclusion)**

sendco@whitchurchps.co.uk

Miss H Hogberg (Year 6 Leader)

hhogberg@whitchurchps.co.uk

**Miss N Ward
(Assistant Headteacher for Early Years)**

nward@whitchurchps.co.uk

**Mrs E Leutfeld (Director of Music)
Music Department**

eleutfeld@whitchurchps.co.uk
music@whitchurchprimary.harrow.sch.uk

**Miss R Francis-Dottin
(Assistant Headteacher for Years 1-3)**

rfrancisdottin@whitchurchps.co.uk

**Mrs K Portou
(Assistant Headteacher for Years 4-6)**

kportou@whitchurchps.co.uk

Mrs R Ahmed (Year 1 Leader)

rahmed@whitchurchps.co.uk

Mrs S Tezel (Year 2 Leader)

stezel@whitchurchps.co.uk

Don't forget our wonderful class reps! If you haven't already, please join your class WhatsApp group for updates and messages.

Questions

Thank you for attending

We will now take questions

